

The Belize Multiple Indicator Cluster Survey (MICS 4) 2011 conducted is part of the UNICEF- GOB Programme of Cooperation to monitor the progress of boys and girls development in Belize. MICS provides updated statistically sound and internationally comparable estimates of a range of indicators in the areas of health, education, child protection (including disabilities), water and sanitation and HIV and AIDS.



Literacy Among Young Women (15-24 yrs.)

Adult literacy is also an MDG indicator, relating to both men and women. In MICS, since only a women's questionnaire was administered, the results are based only on females age 15-24. Literacy was assessed on the ability of women to read a short simple statement or on school attendance.

10%

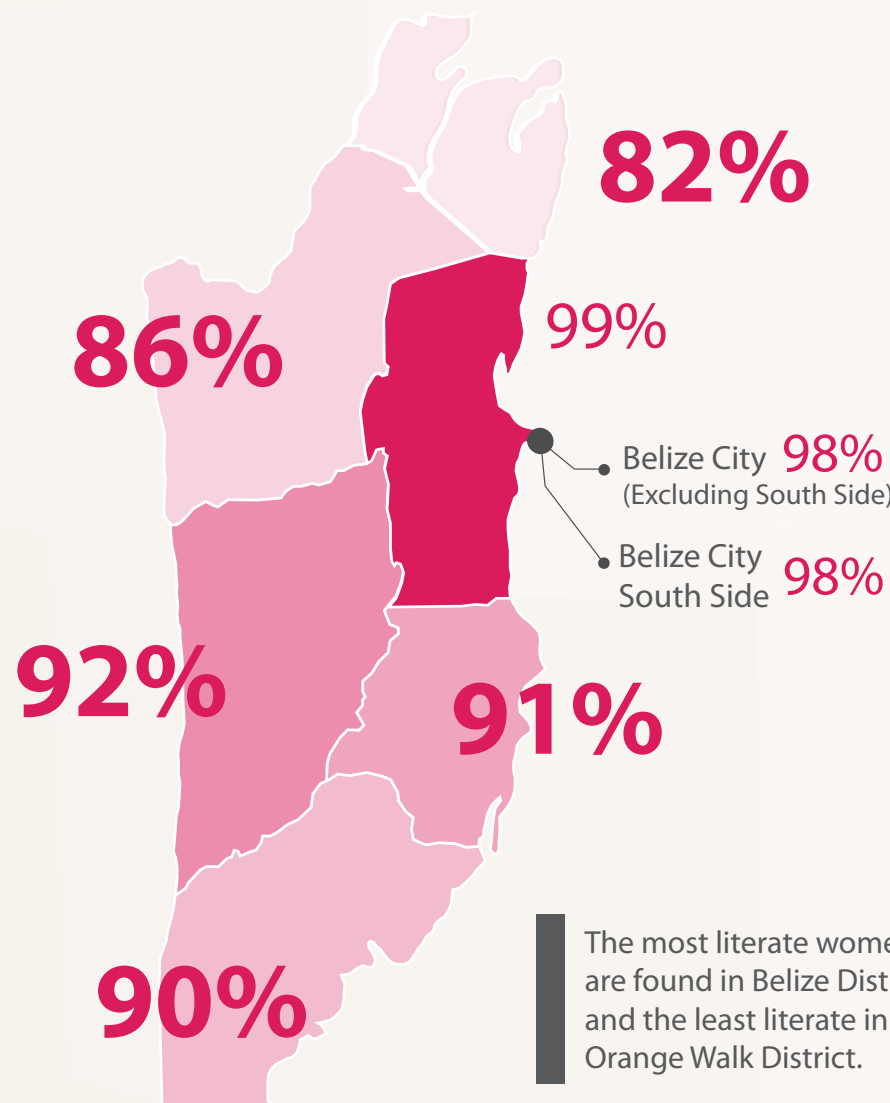


RURAL
29%



URBAN
39%

There is a ten percent gap between urban and rural women.



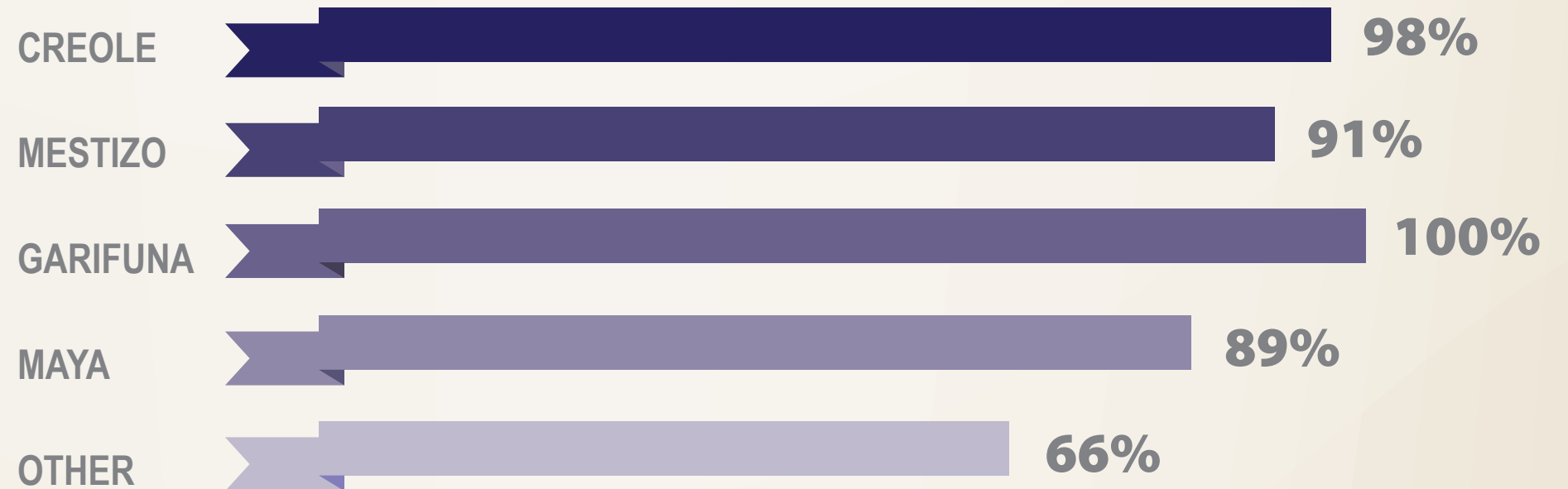
In Belize 91% of women ages 15 - 24 yrs are literate.

The most literate women are found in Belize District and the least literate in the Orange Walk District.



Only 74.6 percent of women with poorest wealth index were literate and rates steadily increased to women from the richest wealth quintile at a rate of 99.2 percent.

Women from households with Garifuna heads had a 100 percent literacy rate while women from Maya households had a literacy rate of 88.7 percent.



MOTHER'S EDUCATION



PRIMARY SCHOOL
79%

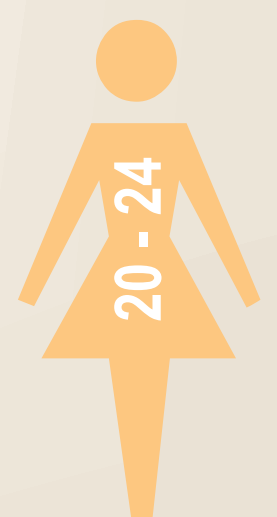


SECONDARY + SCHOOL
100%

Literacy among teens is slightly higher than that of young adult women



15 - 19
92%



20 - 24
91%

The Belize Multiple Indicator Cluster Survey (MICS 4) 2011 conducted is part of the UNICEF- GOB Programme of Cooperation to monitor the progress of boys and girls development in Belize. MICS provides updated statistically sound and internationally comparable estimates of a range of indicators in the areas of health, education, child protection (including disabilities), water and sanitation and HIV and AIDS.



Primary School Attendance (Girls & Boys)

Universal access to basic education and the achievement of primary education by the world's children is one of the most important goals of the Millennium Development Goals and A World Fit for Children. Education is a vital prerequisite for combating poverty, empowering women, protecting children from hazardous and exploitative labour and sexual exploitation, promoting human rights and democracy, protecting the environment, and influencing population growth.

The indicators for primary include:

- Net intake rate in primary education
- Primary school net attendance ratio (adjusted)
- Female to male education ratio (or gender parity index - GPI) in primary and secondary school

The indicators of school progression include:

- Children reaching last grade of primary
- Primary completion rate
- Transition rate to secondary school

The majority of children of primary school age are attending school

94%



URBAN

98%

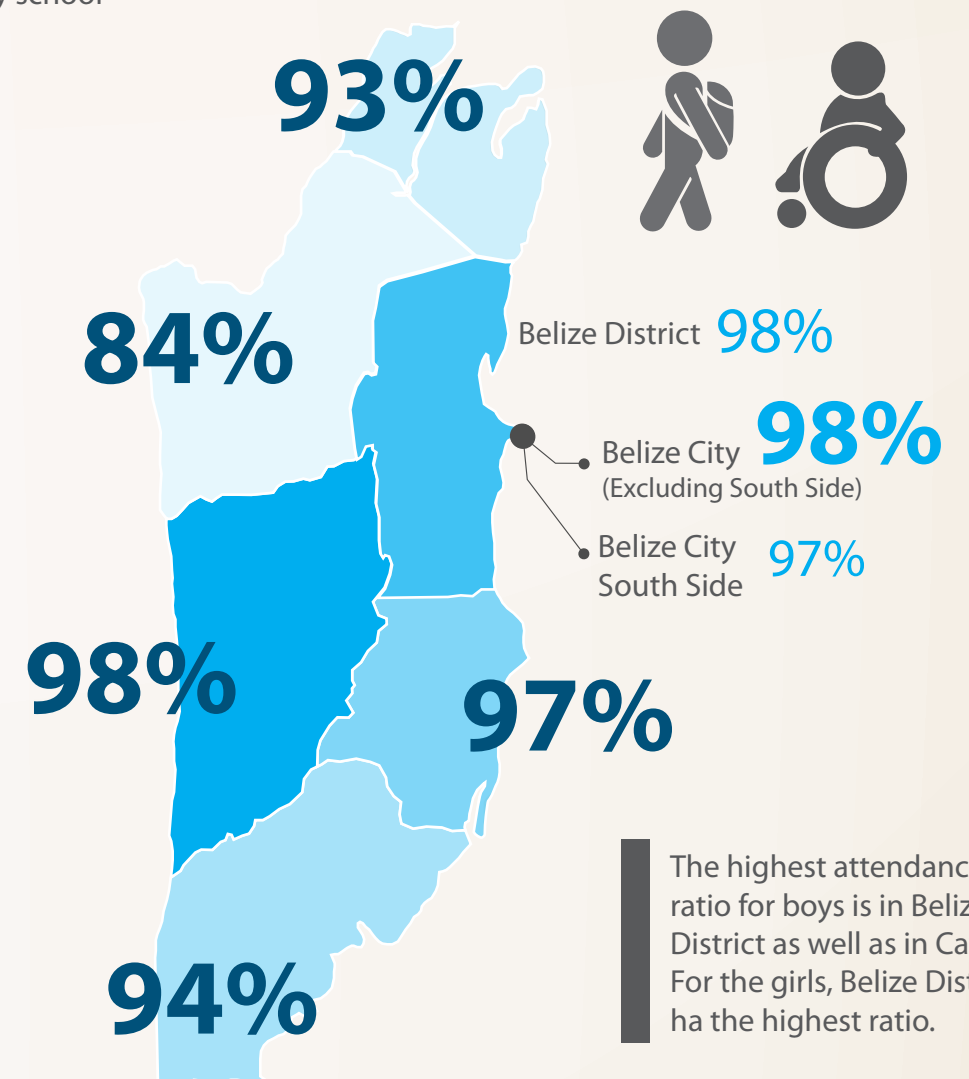
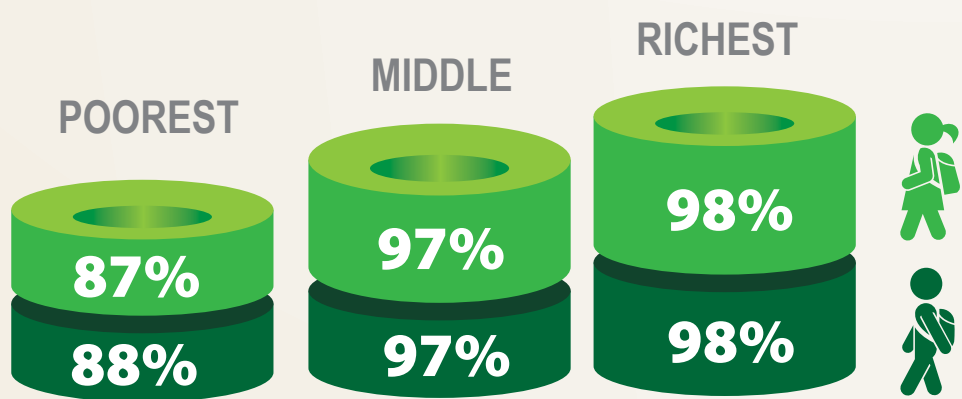
RURAL

92%

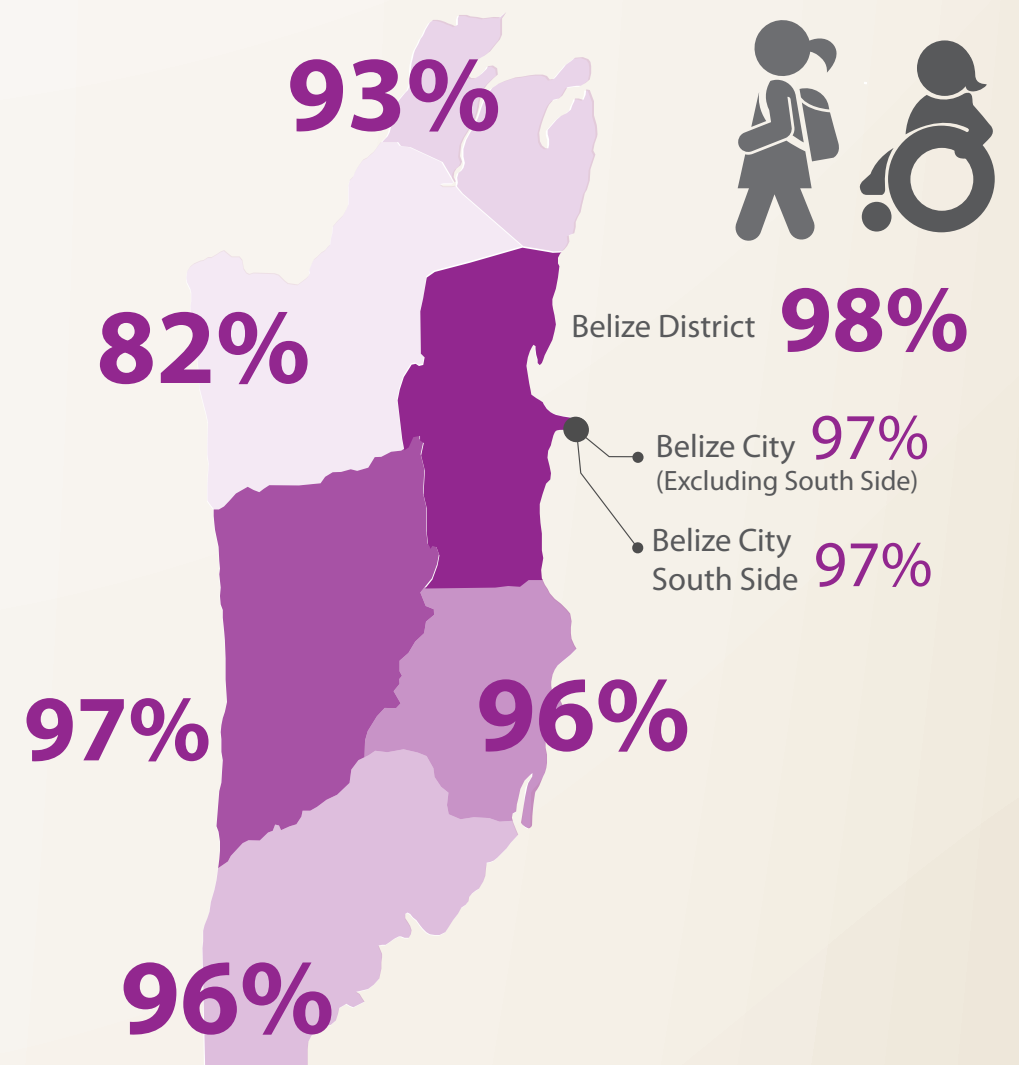
In urban areas have a higher percentage of children attending school but not by a large margin.



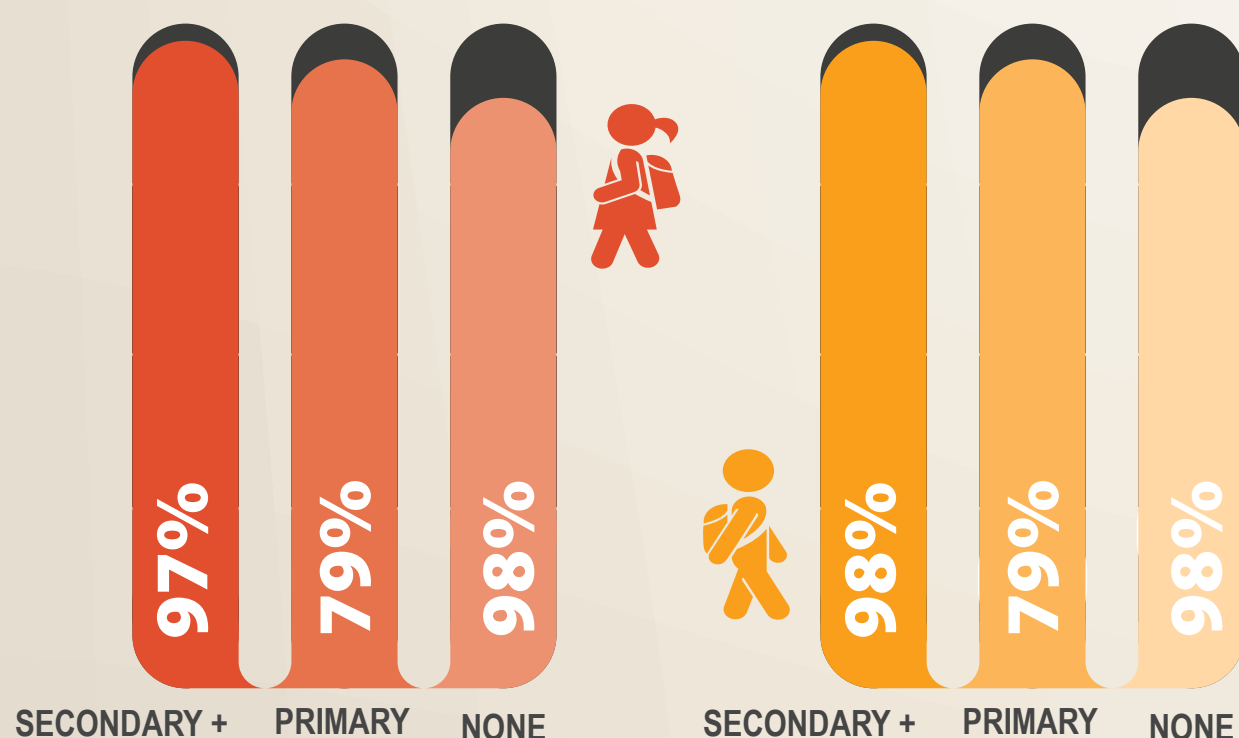
FINANCIAL STATUS



The highest attendance ratio for boys is in Belize District as well as in Cayo. For the girls, Belize District has the highest ratio.



MOTHER'S EDUCATION



As the educational level of the mother increases, the total net attendance ratio also increases for mother's with secondary education or better education.



ETHNICITY

99%

97%

97%

95%

65%

CREOLE

MESTIZO

GARIFUNA

MAYA

OTHER

98%

98%

94%

96%

61%

LITERACY & EDUCATION

MICS FINAL REPORT



unicef
unite for children

The Belize Multiple Indicator Cluster Survey (MICS 4) 2011 conducted is part of the UNICEF- GOB Programme of Cooperation to monitor the progress of boys and girls development in Belize. MICS provides updated statistically sound and internationally comparable estimates of a range of indicators in the areas of health, education, child protection (including disabilities), water and sanitation and HIV and AIDS.



Secondary School Attendance

Only about **HALF** of the children of secondary school age are attending secondary school.

55%



Of the remaining half some of them are either out of school or attending primary school.

URBAN



60%



77%

RURAL



43%

49%

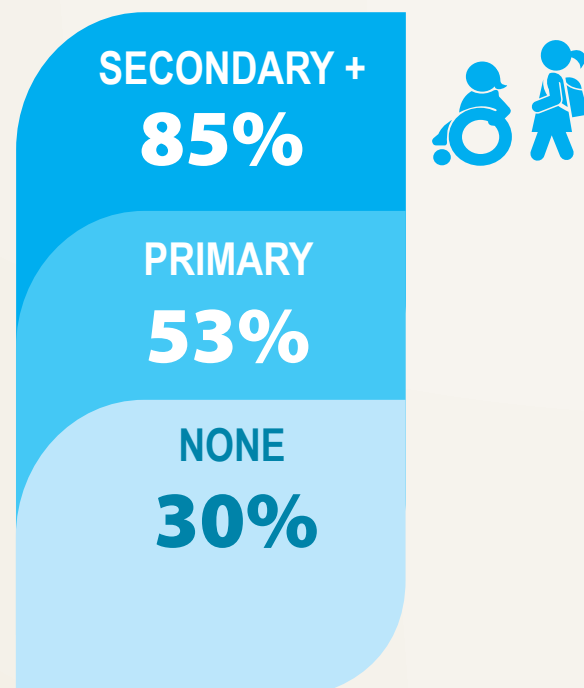
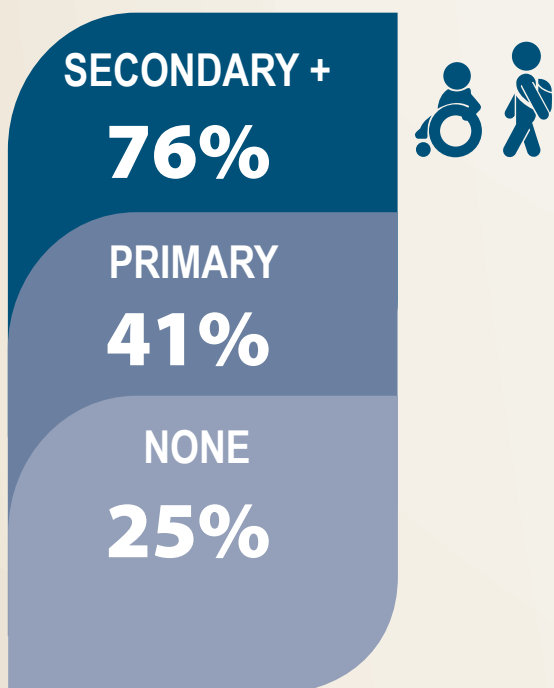
In urban areas have a higher percentage of children attending school. The rural areas are

BELOW 50%

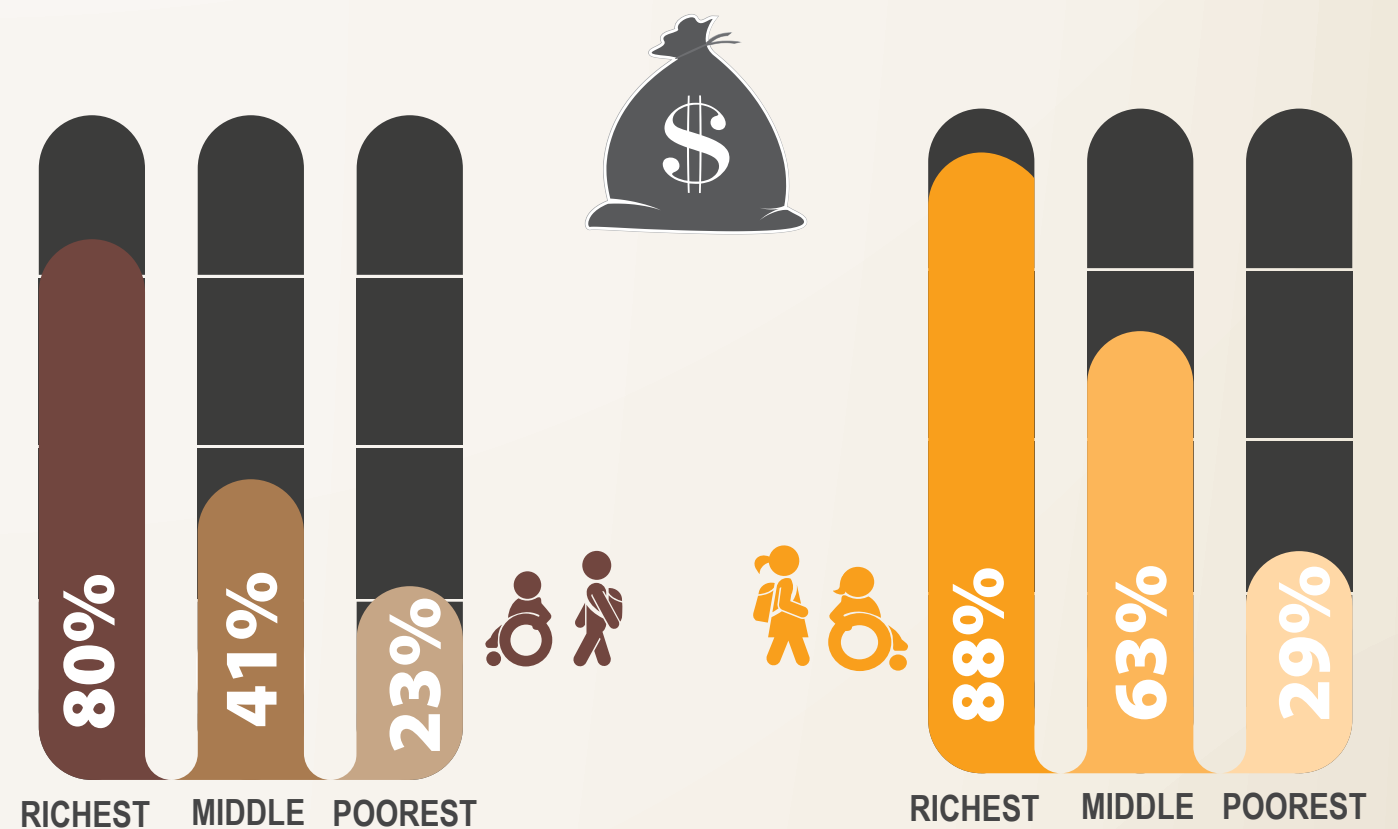
Almost two in five (20%) of the children of secondary school age are attending primary school when they should be attending secondary school.



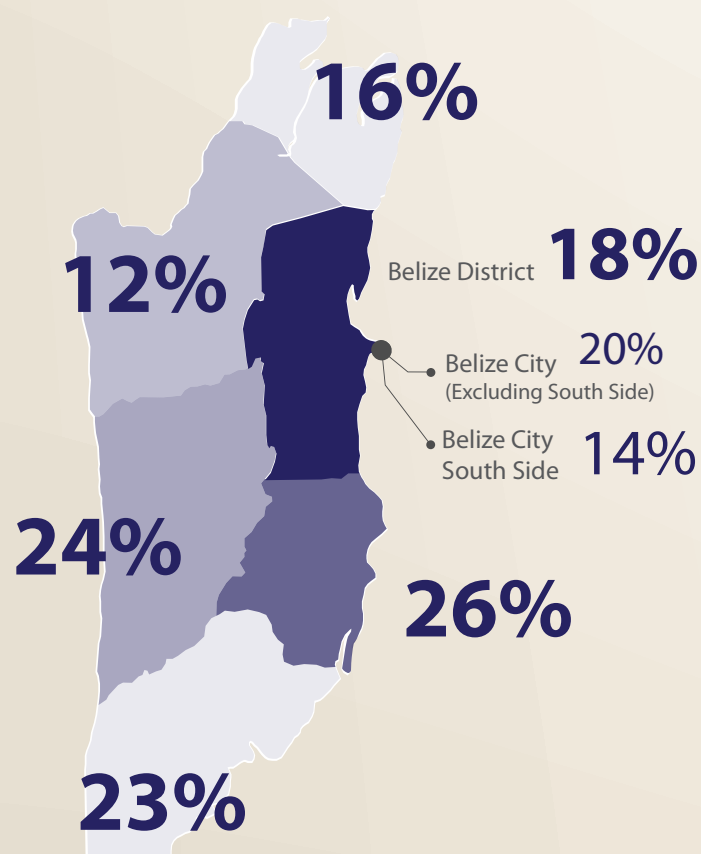
MOTHER'S EDUCATION



FINANCIAL STATUS

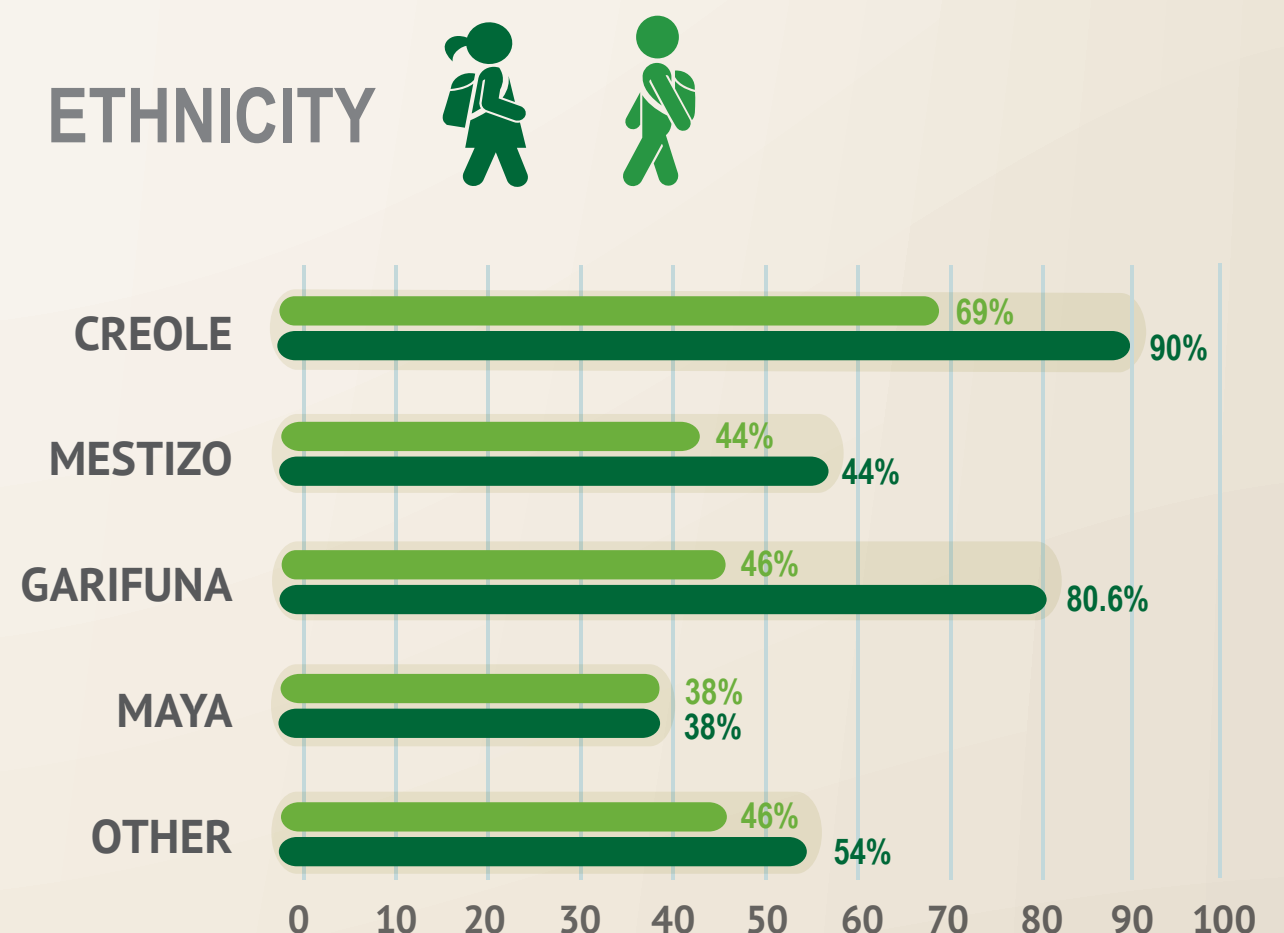


Mother's education and wealth seem to correlate positively with increasing net ratios.



The largest percentage of secondary age children in primary school come from Maya households (30%) and from the Stann Creek District (26%).

ETHNICITY





The Belize Multiple Indicator Cluster Survey (MICS 4) 2011 conducted is part of the UNICEF- GOB Programme of Cooperation to monitor the progress of boys and girls development in Belize. MICS provides updated statistically sound and internationally comparable estimates of a range of indicators in the areas of health, education, child protection (including disabilities), water and sanitation and HIV and AIDS.



Primary School Completion & Transition to Secondary School

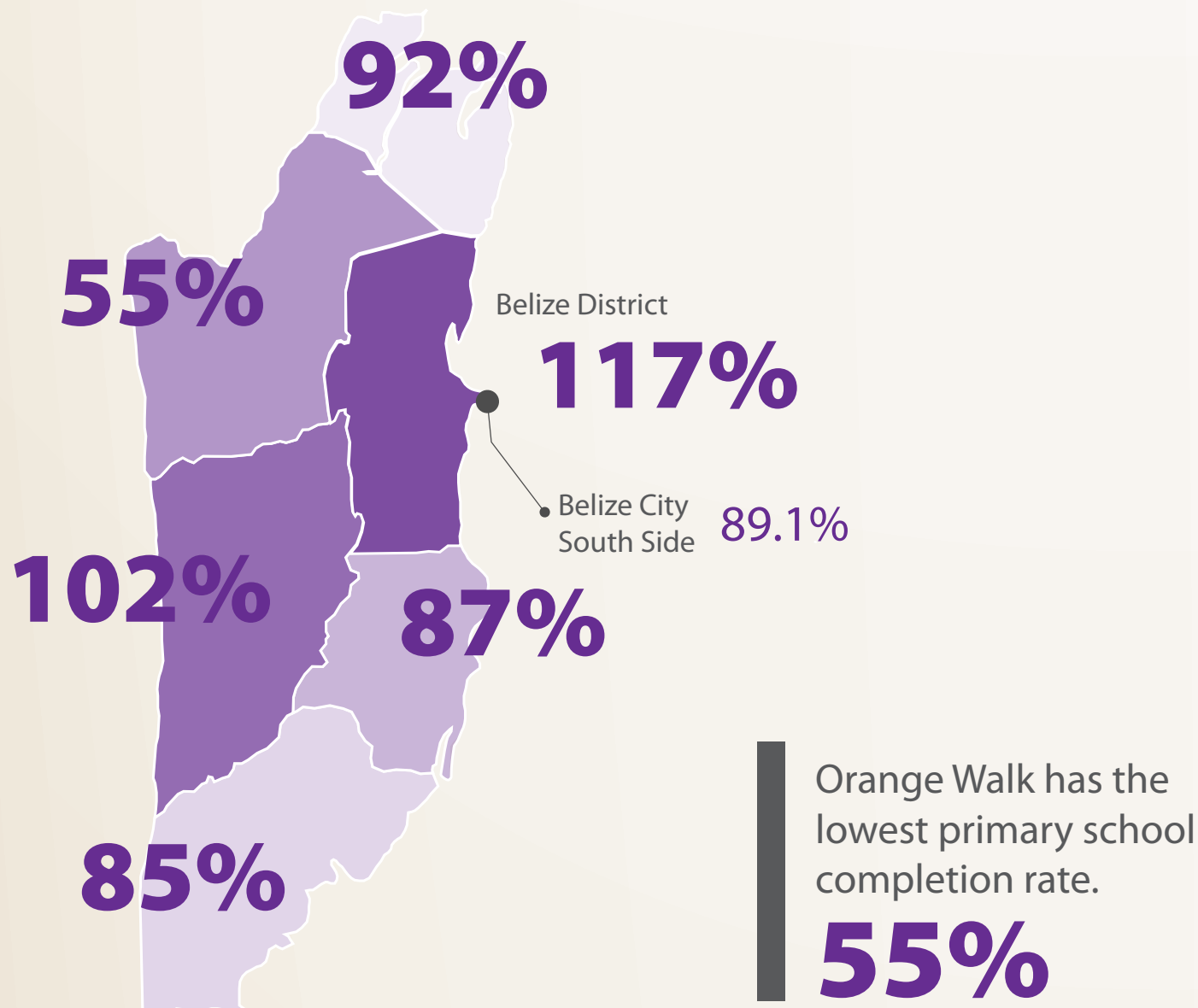
97%



88%

93%

of the children of primary completion age (12 to 14 years) were attending the last grade of primary education.



URBAN

102.1%

Urban children complete at a slightly higher rate than rural children.

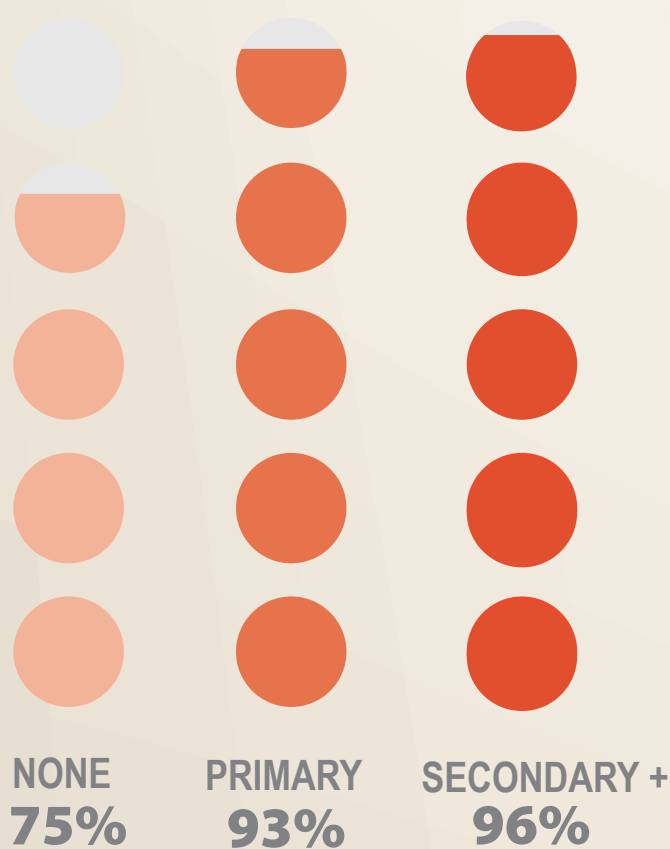


RURAL

87%



MOTHER'S EDUCATION



Increasing mother's education correlates with increasing transition rates and also increasing wealth correlates with increasing transition rates.



FINANCIAL STATUS

