

EARLY CHILD DEVELOPMENT

MICS FINAL REPORT



unicef
unite for children

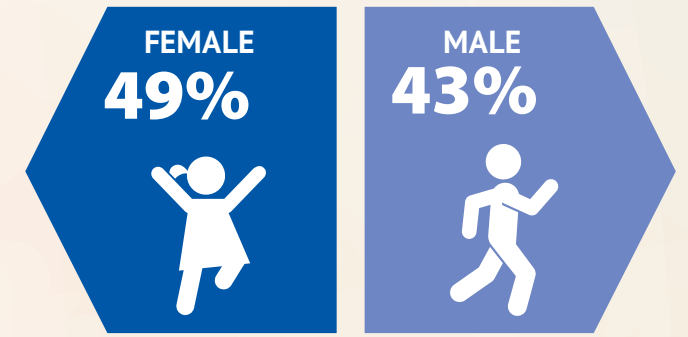
The Belize Multiple Indicator Cluster Survey (MICS 4) 2011 conducted is part of the UNICEF- GOB Programme of Cooperation to monitor the progress of boys and girls development in Belize. MICS provides updated statistically sound and internationally comparable estimates of a range of indicators in the areas of health, education, child protection (including disabilities), water and sanitation and HIV and AIDS.

Early child development is defined as an orderly, predictable process along a continuous path, in which a child learns to handle more complicated levels of moving, thinking, speaking, feeling and relating to others. Physical growth, literacy and numeracy skills, socio-emotional development and readiness to learn are vital domains of a child's overall development, which is a basis for overall human development

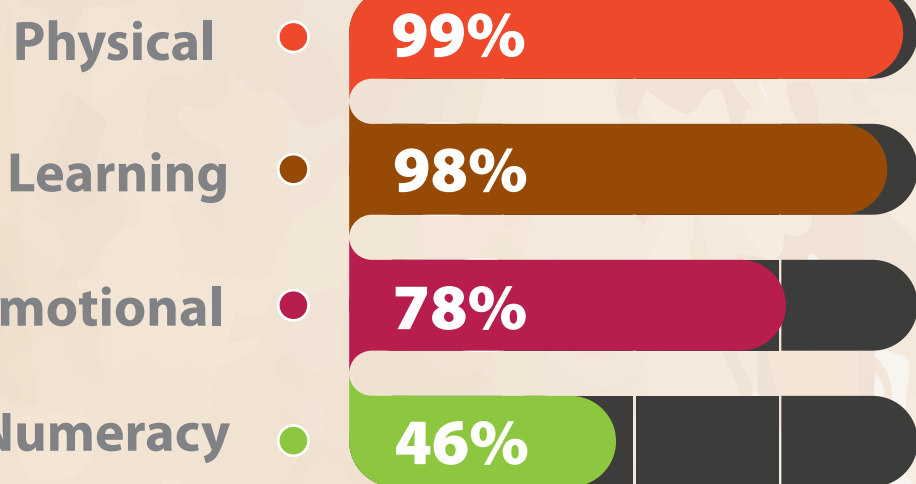


Literacy - Numeracy Development (36 - 59 mts)

Children are identified as being developmentally on track based on whether they can identify/name at least ten letters of the alphabet, whether they can read at least four simple, popular words, and whether they know the name and recognize the symbols of all numbers from 1 to 10. If at least two of these is true, then the child is considered developmentally on track.



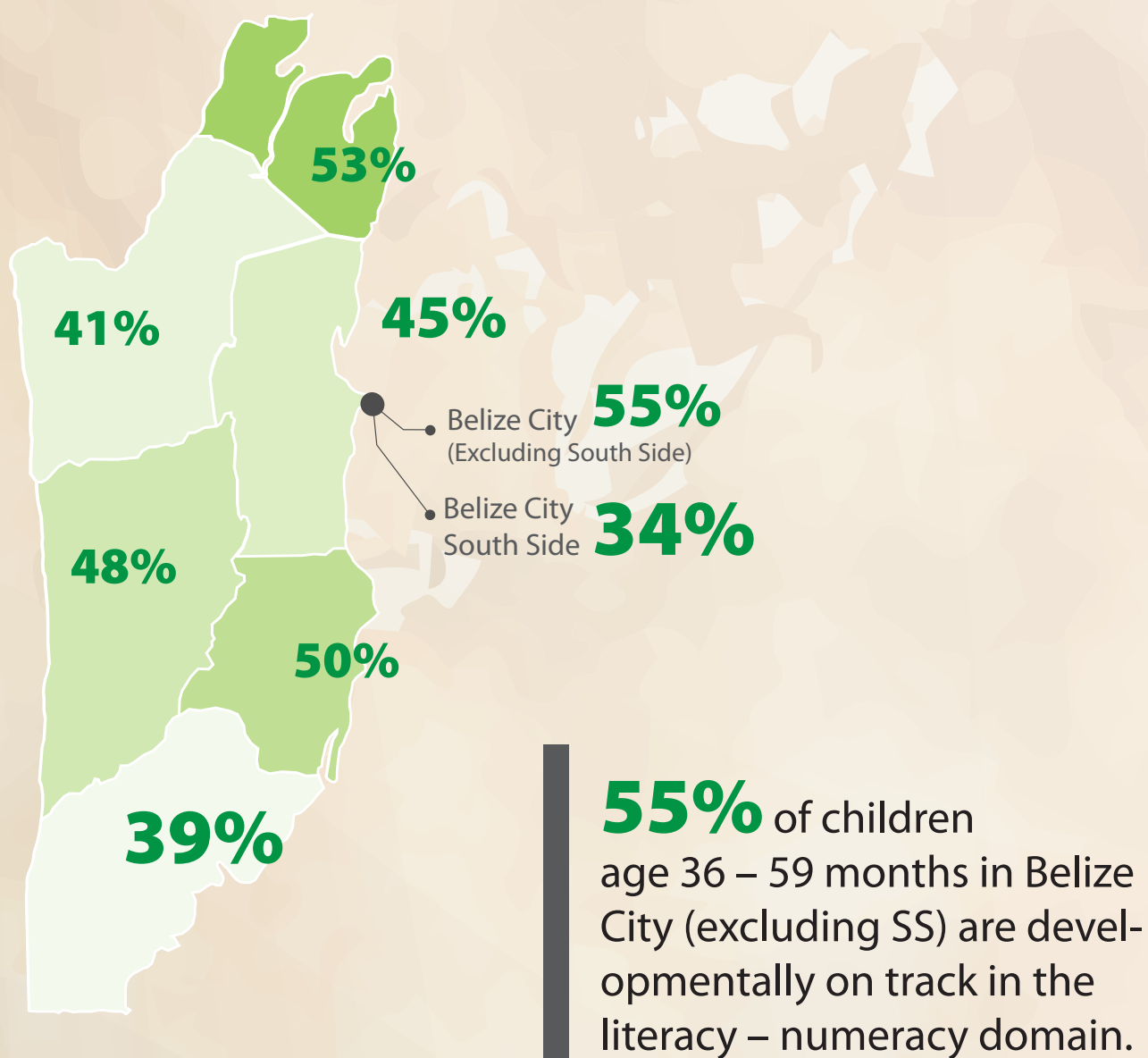
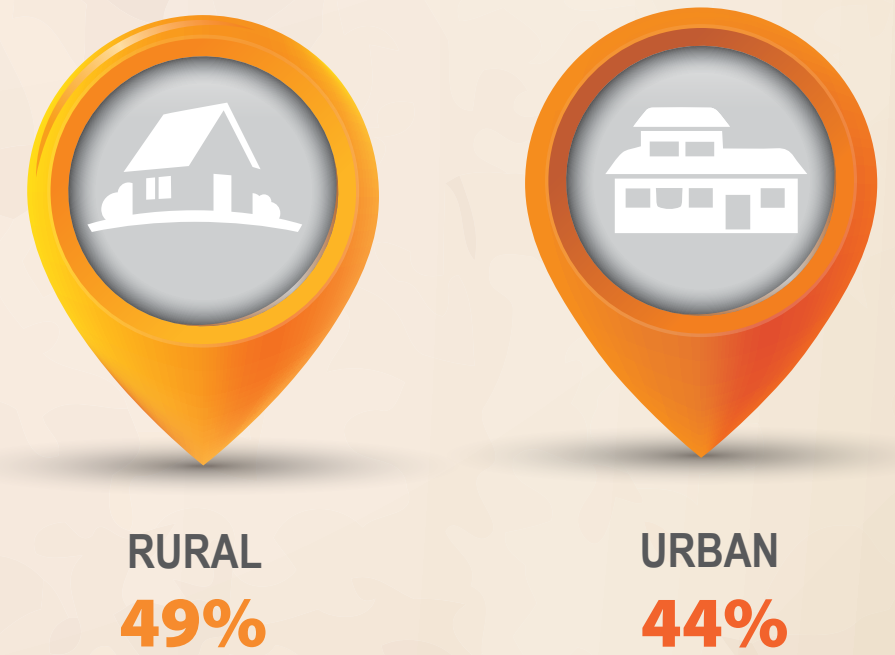
In Belize, **45%** of children aged 36-59 months are **developmentally on track** the literacy – numeracy domain.



OVERALL FINDINGS

The analysis of four domains of child development shows that 98.4 percent of children are on track in the learning domain, 99.0 percent in physical, but 78.5 percent in the social-emotional and only **45.9%** in the literacy-numeracy domain.

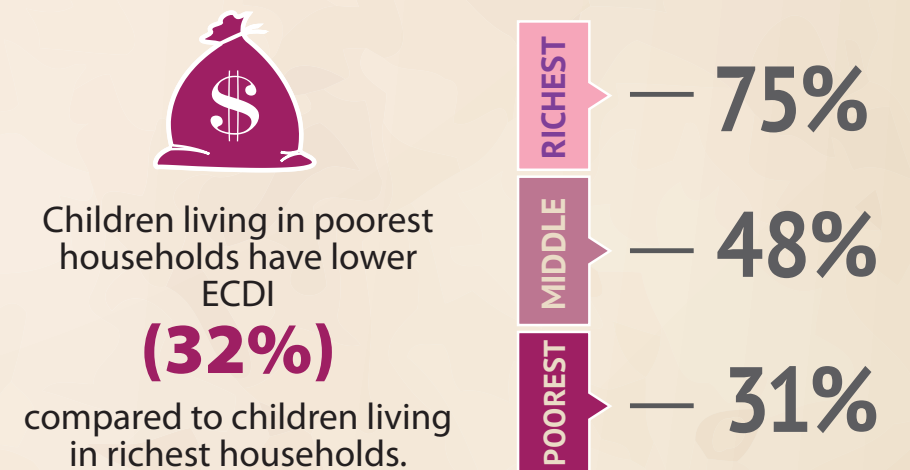
Both Rural and Urban areas fall below 50%.



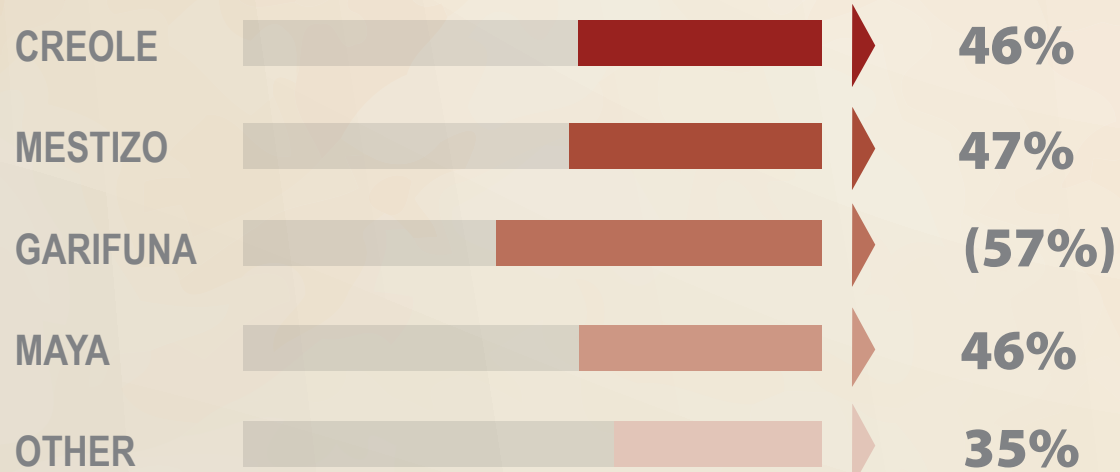
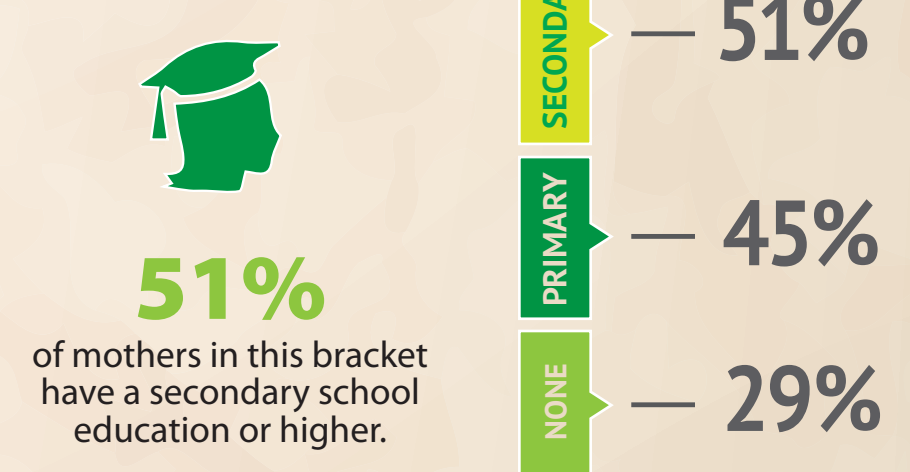
PRESCHOOL ATTENDANCE



FINANCIAL STATUS



MOTHER'S EDUCATION



* () Figures that are based on 25 - 49 un-weighted cases

Percentage of children who are developmentally on track in the literacy – numeracy domain



The Belize Multiple Indicator Cluster Survey (MICS 4) 2011 conducted is part of the UNICEF- GOB Programme of Cooperation to monitor the progress of boys and girls development in Belize. MICS provides updated statistically sound and internationally comparable estimates of a range of indicators in the areas of health, education, child protection (including disabilities), water and sanitation and HIV and AIDS.



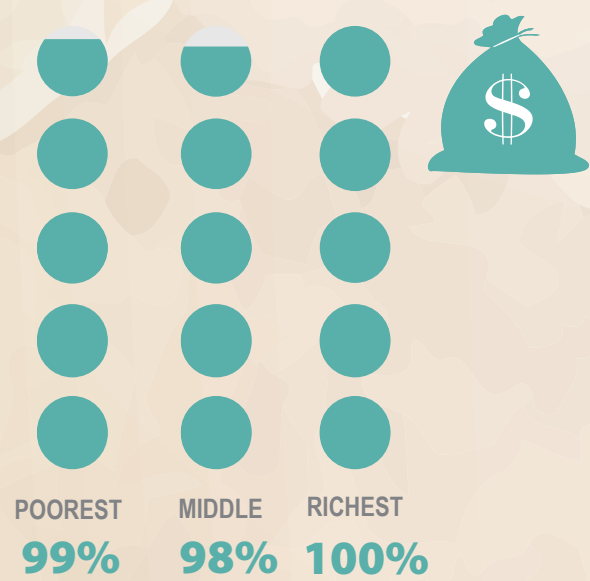
Physical Development

FEMALE
99%

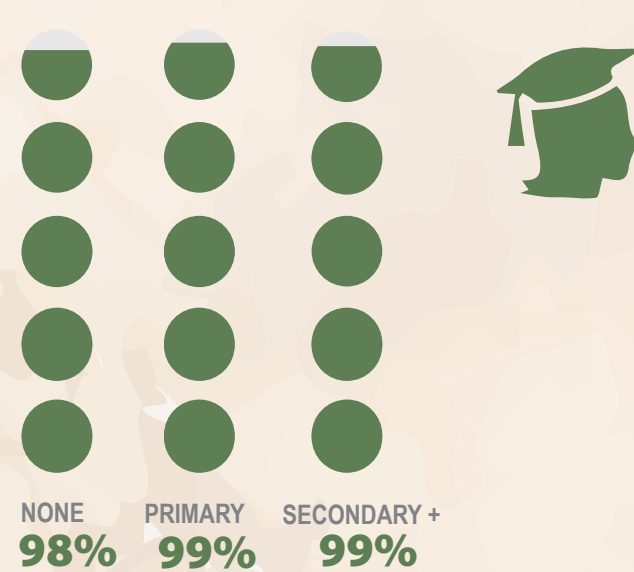


MALE
99%

FINANCIAL STATUS



MOTHER'S EDUCATION



PRESCHOOL ATTENDANCE

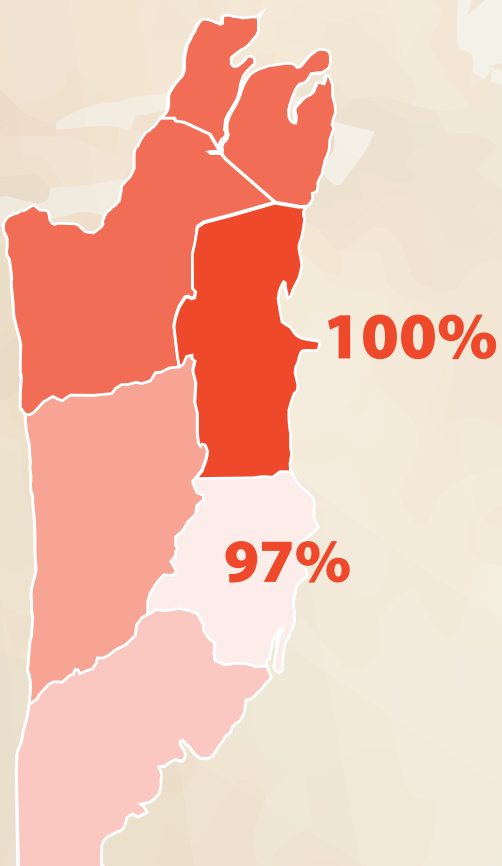
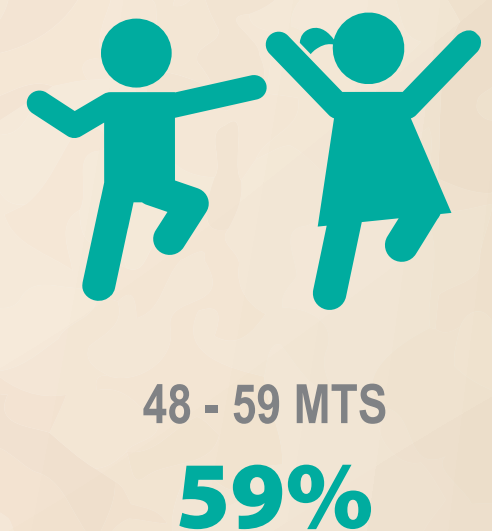
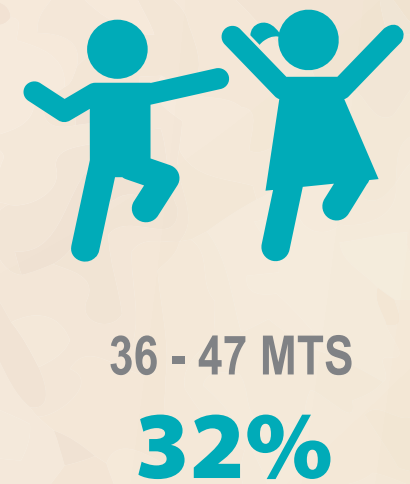


URBAN
99%

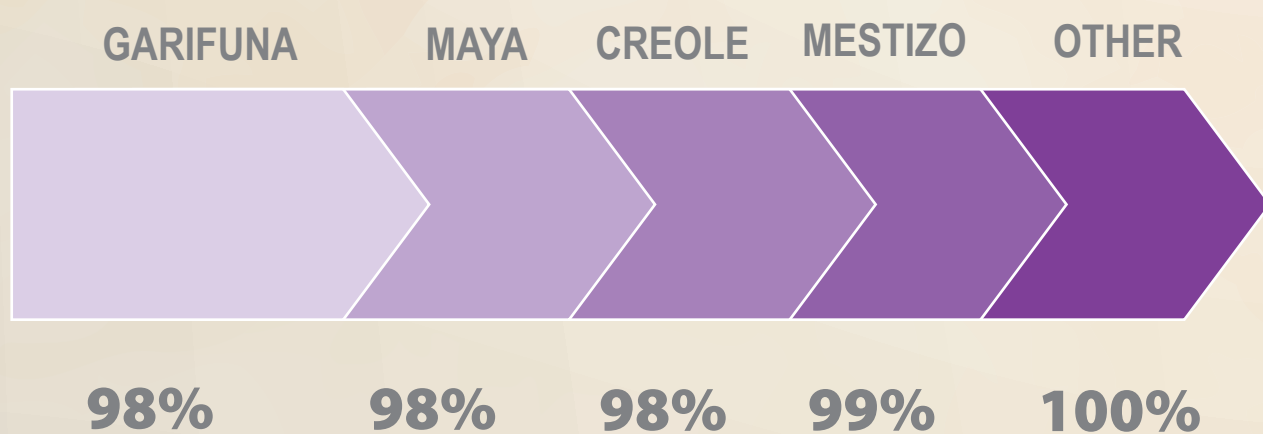


RURAL
99%

AGE RANGE



The highest physical development ratio is in the Belize District. However the entire country had very high percentages with all being over **95%**



Children from households with 'Other' heads had **100%** physical development rate. Meztizo follows closely behind with **99%**

EARLY CHILD DEVELOPMENT

MICS FINAL REPORT



unicef
unite for children

The Belize Multiple Indicator Cluster Survey (MICS 4) 2011 conducted is part of the UNICEF- GOB Programme of Cooperation to monitor the progress of boys and girls development in Belize. MICS provides updated statistically sound and internationally comparable estimates of a range of indicators in the areas of health, education, child protection (including disabilities), water and sanitation and HIV and AIDS.

In the social-emotional domain, children are considered to be developmentally on track if two of the following is true: If the child gets along well with other children, if the child does not kick, bite, or hit other children and if the child does not get distracted easily.



Social - Emotional Development

In Belize 78.4% of children age 36 – 59 months are developmentally on track in the social - emotional domain.

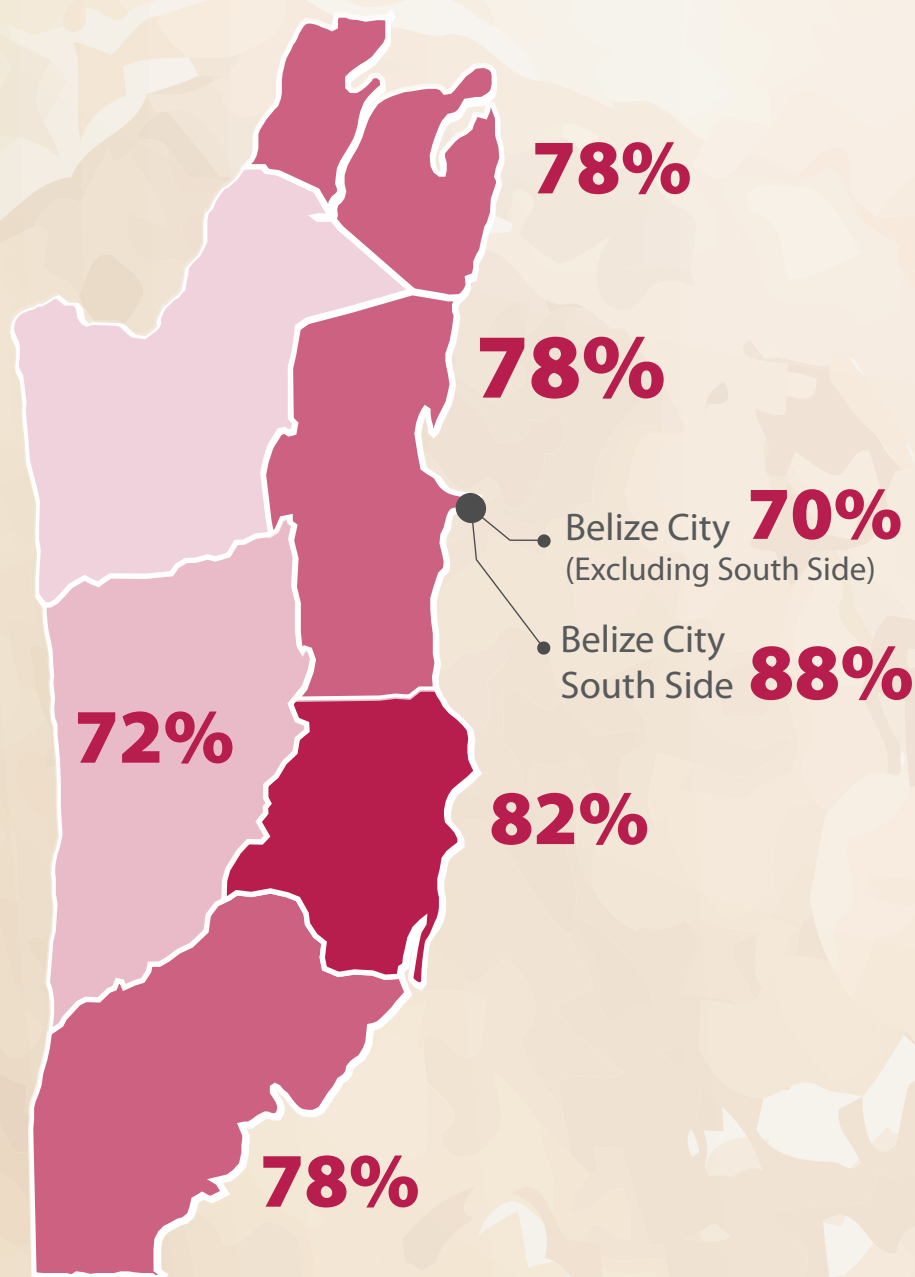


MALE

80.1%

FEMALE

77%



87% of children age 36 – 59 months in Belize City (excluding SS) are developmentally on track in the social - emotional domain.

RURAL

78%



URBAN

80%



FINANCIAL STATUS



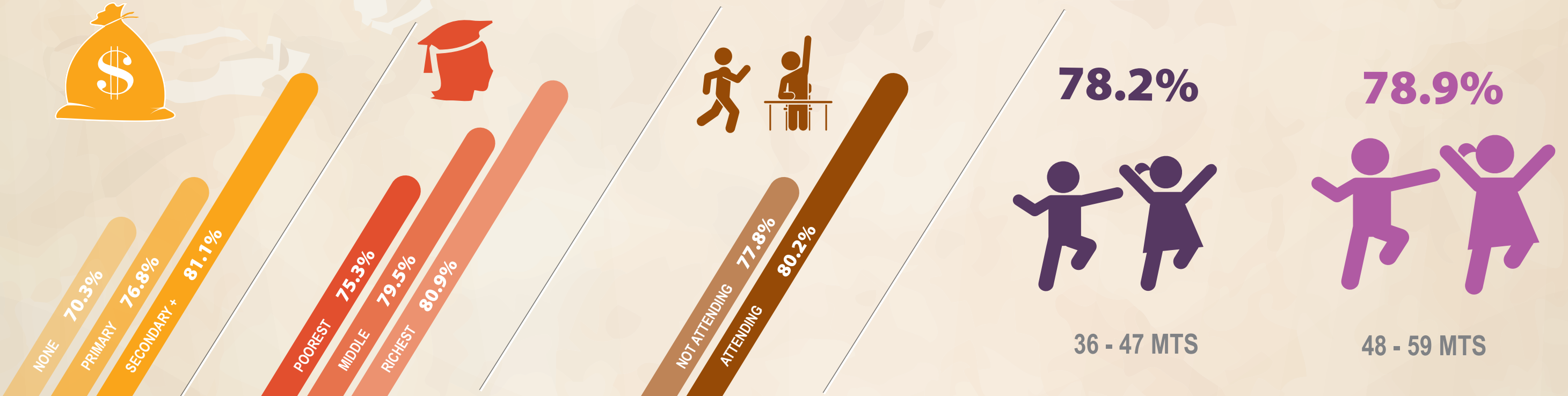
MOTHER'S EDUCATION



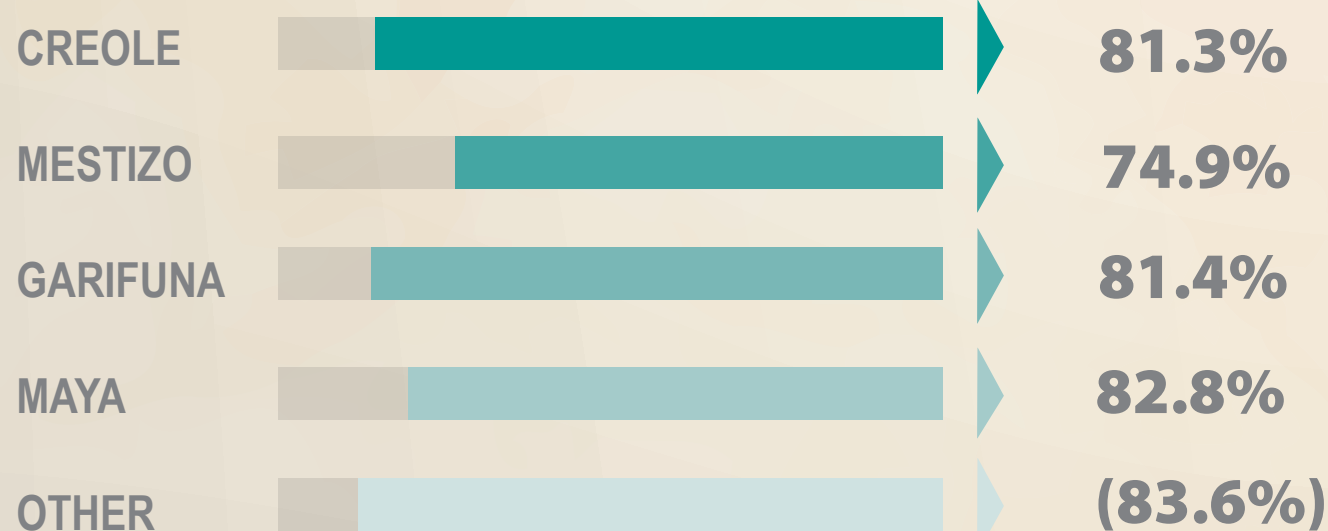
PRESCHOOL ATTENDANCE



AGE RANGE



HOUSEHOLD FINDINGS



Children from households with 'Other' heads had the highest physical development rate. Meztizo falls behind with

75%

* () Figures that are based on 25 - 49 un-weighted cases

The Belize Multiple Indicator Cluster Survey (MICS 4) 2011 conducted is part of the UNICEF- GOB Programme of Cooperation to monitor the progress of boys and girls development in Belize. MICS provides updated statistically sound and internationally comparable estimates of a range of indicators in the areas of health, education, child protection (including disabilities), water and sanitation and HIV and AIDS.

If the child follows simple directions on how to do something correctly and/or when given something to do, is able to do it independently, then the child is considered to be developmentally on track in the learning domain.



Learning Development

In Belize 98.4% of children are developmentally on track in the learning domain.



URBAN
99.7%



RURAL
98%

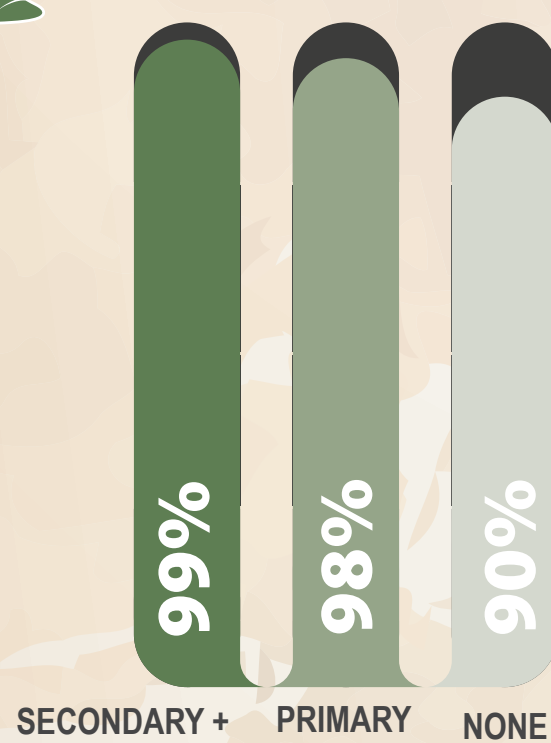


PRESCHOOL ATTENDANCE

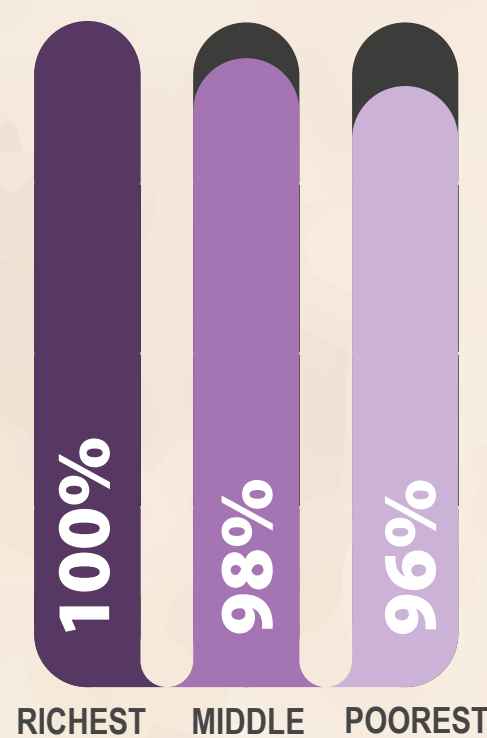
■ NOT ATTENDING
■ ATTENDING



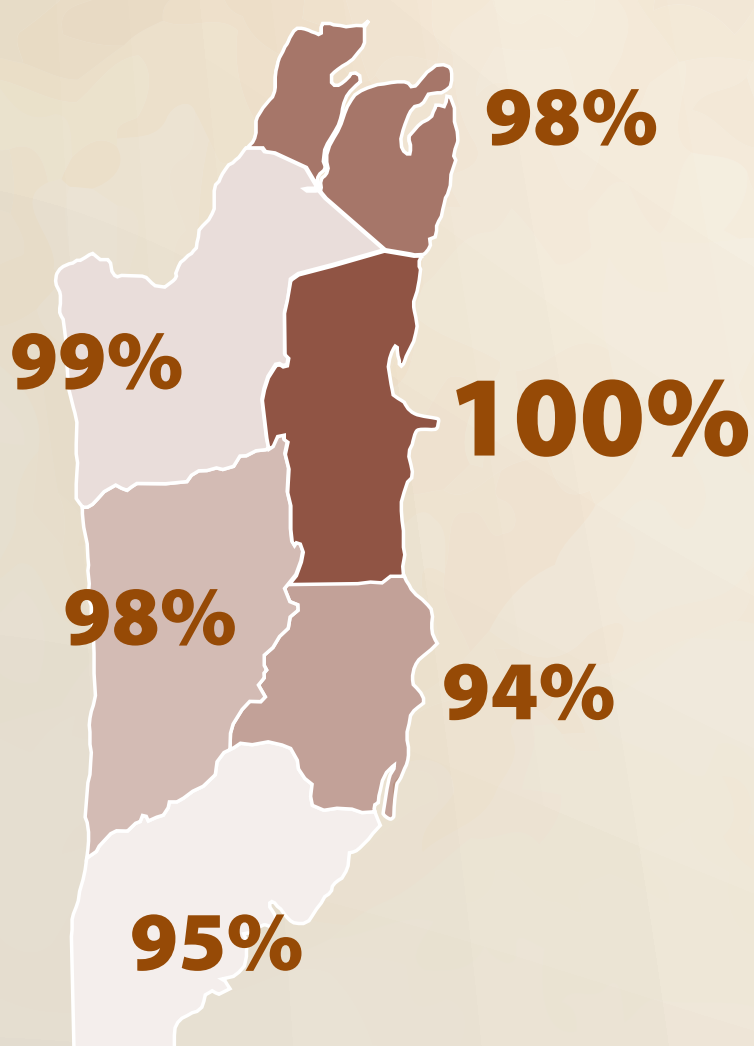
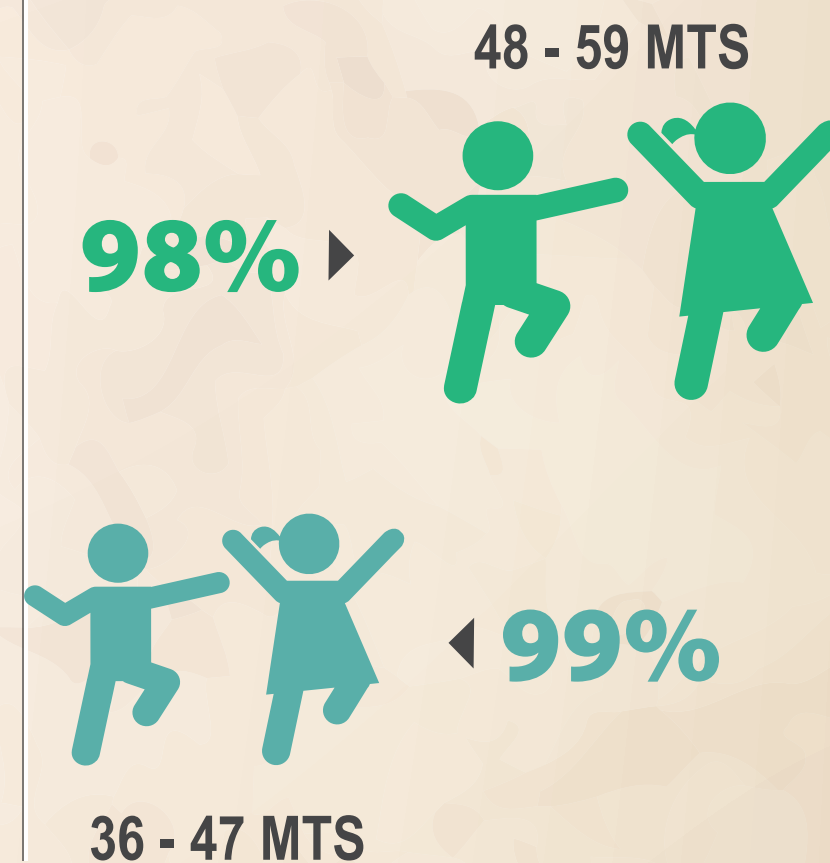
FINANCIAL STATUS



MOTHER'S EDUCATION



AGE RANGE



100% of children in Belize City (excluding SS) are developmentally on track in the learning domain.

Children from households with 'Garifuna' heads had **100%**

